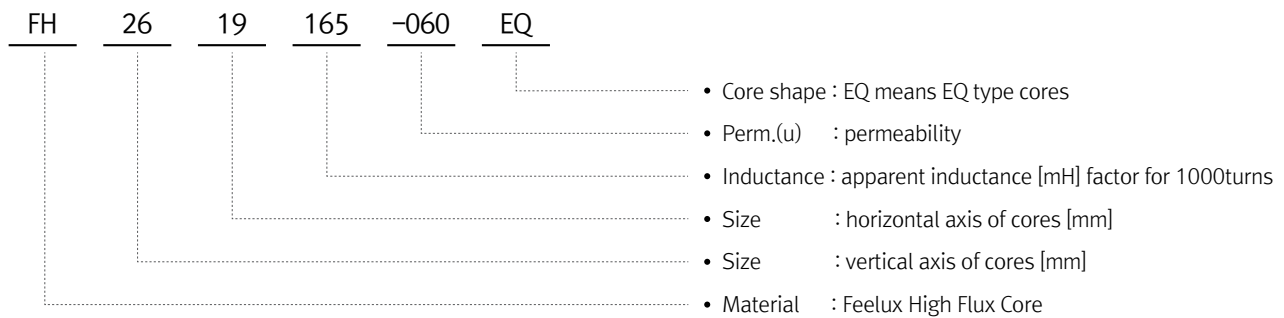


EQ Core series

Identification of Feelux EQ Core Series



Where,

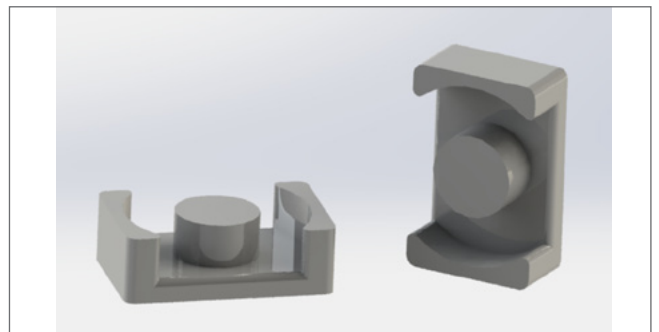
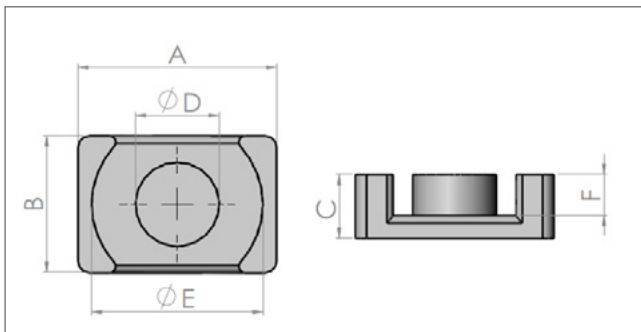
H : High Flux Material [Fe / Ni] 165 : 150mH/N² at 1000turns

26 : 43mm

19 : 21mm

Dimension specification of Feelux EQ Core series

[Fig.1] mechanical out lines [unit : mm] about EQ core series



[Table 2] shows out dimension specification of EQ core series

P/N	Dimensions(mm)						Path length (cm)	Cross Section Area(cm ²)	AL value (nH/n ²) ± 12%		
	A	B	C	D(min)	E	F			26u	40u	60u
2014 EQ	20.50	14.00	8.10	8.80	18.00	5.70	4.52	0.608	44	68	101
2014 EQ	20.50	14.00	10.10	8.80	18.00	7.70	5.32	0.608	37	57	86
2619 EQ	26.50	19.00	10.10	12.00	22.60	6.80	5.47	1.198	72	110	165
2619 EQ	26.50	19.00	12.40	12.00	22.60	9.10	6.39	1.198	61	94	141
3222 EQ	32.00	22.00	10.30	13.50	27.60	6.60	6.03	1.523	83	127	190
3222 EQ	32.00	22.00	15.20	13.50	27.60	11.50	7.99	1.523	62	96	144
3626 EQ	36.00	26.00	17.40	14.40	32.00	13.40	9.47	1.808	62	96	144
4128 EQ	41.50	28.00	19.90	14.90	36.50	15.40	11.52	1.997	57	87	131
5032 EQ	50.00	32.00	25.00	20.00	44.00	19.50	13.34	3.141	77	118	178
6542 EQ	65.00	42.00	30.00	26.00	57.20	22.80	16.53	5.309	105	161	242